

# 1/8 Scale 4WD Electric off-road buggy

## Manual

www.xingyaohua.com

# pirates2

BX-8E



**BRUSHLESS**  
**#9020**

### B-10E Specifications

Length.....19.13" (486mm)  
Width .....12.1" (306mm)  
Height ..... 8.1"(205mm)  
Front Track.....10.2" (258mm)  
Rear Track.....10.0"(255mm)  
Gear Ratio..... 8.2: 1  
Ground Clearance.... 2.76" (70mm)  
Wheelbase.....12.7"-12.8"(322-326mm)

**ZD RACING**

This manual expatiates the structure of the model. In order to better maintain and replace the spare parts, please keep and take it for reference. The user who is not familiar with the assembling, please contact with the wholesaler, nominated model shops and the Special after-sale service outlets.

The actual version is subject to the real standard. It would be varied because of different versions.

The spare parts, appearance of this model will be tiny revised and changed before totally upgrade into a new version, ZD reserve this rights, and no further notice.

## INTRODUCE

Thank you for choosing the ZD racing series products. Our company take the target of offering the top quality and best service. Through attending the competitions and repeated testing the products, constantly enhancing our experience, then further improving the design and quality control. Only for showing the great performance products. This manual including all the important matter before operating the car. We advise studying and knowing the control system before assembling or playing it. As well as the further upgrade and maintenance. Please feel free to consult our authorized dealer, nominated model shop or special after-sale service station if any question refer to the play or use. Our website is: [www.xingyaohua.com](http://www.xingyaohua.com). We are wholeheartedly for your service.

## QUALITY ASSURANCE

Our company take the fully responsibility to the quality defect during the manufacturing process. This assurance is only subject to the product only and its spare parts.

**These situation below are not included:**

The breakage caused by using, assembling or adjustment.  
The other breakage not related to the quality itself.

## IMPORTANT STATEMENT

The Model Car is not a toy. It is the casual item combine a lot of high technology products. If using improper may bring serious damage. Please read the manual detailed before using, and keep yourself safe.

**Attention:** Any operation of the Model car, the manufacturer and dealers are incapable of take the responsibility of the accidents caused by wear out or abnormal assemble.

This product is provided to those who have operation remote control model car experience or a technical personnel in the guidance of the local legal field, in has to ensure the safe and correct operation under the condition of use. Our company will not accept any operation and use the control on any performance and safety responsibility

The RC products are belong to consumable goods, if disassemble, it may cause the spare parts loss, Any use of goods caused by bad or not satisfied, will not be able to replace or return, such as in case of operation maintenance problems, the company designated national distributor model shop and special after-sale service store will provide technical guidance, and special parts supply services.



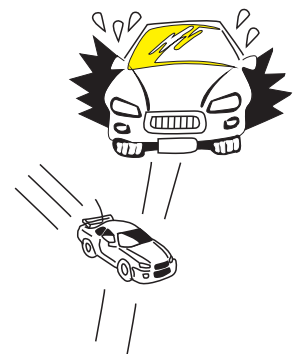
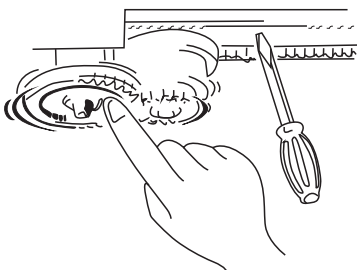
**Warning:** because of the neglect of these operating instructions, and use wrongly may cause property damage or serious injury.

**Note:** because of the neglect of these operating instructions, and use wrongly could be dangerous.

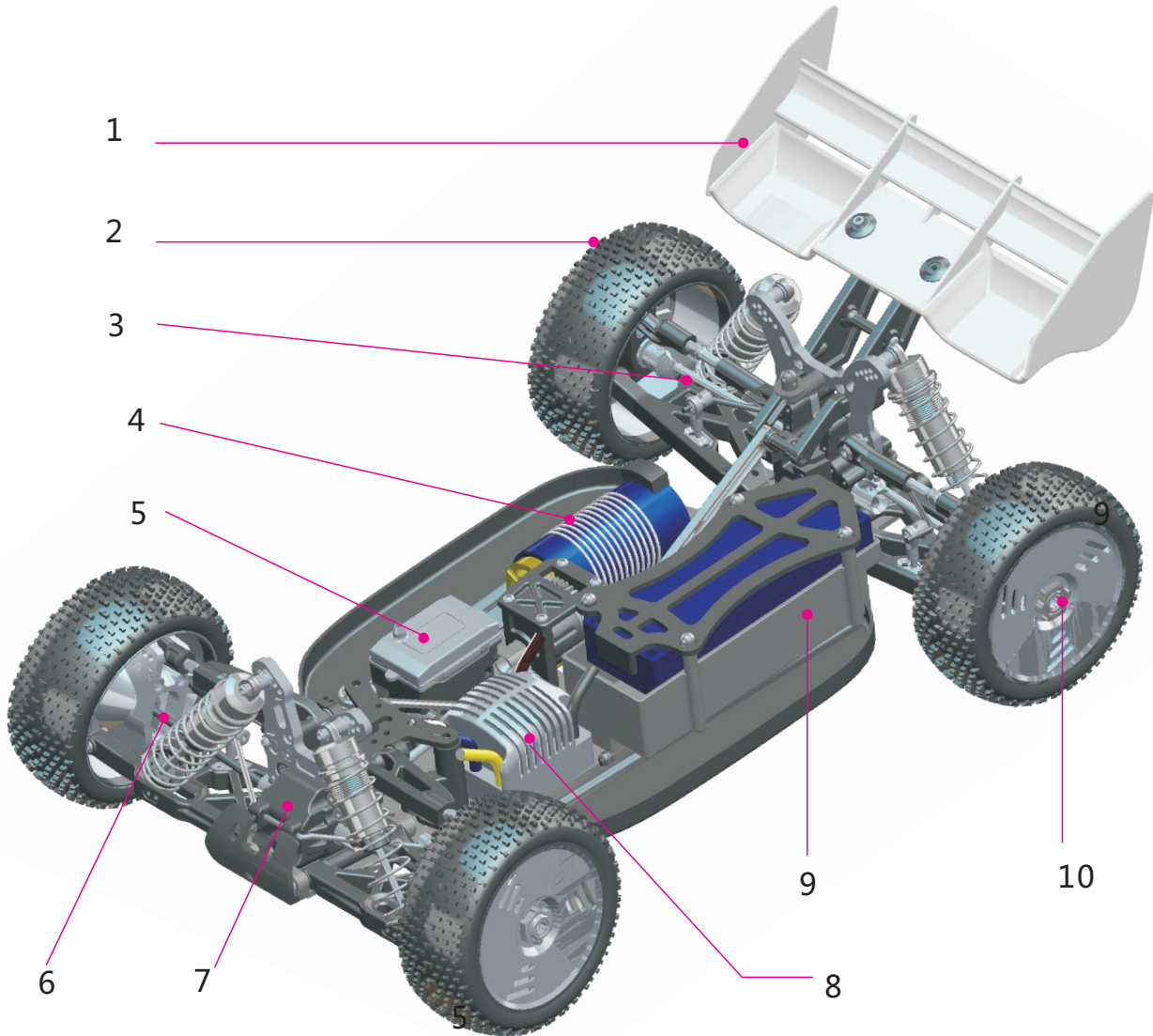
**Ban:** in any prohibited environment, do not try to operation.

## SAFETY GUIDELINES

1. Don't operation the models close to open fires or near heat source.
2. Operation must be in the open and dry site .
3. The thunderstorm weather is forbidden to operate this product.
4. Away from the high voltage cables.
5. Some of the parts will be exothermic or burning after operated.
6. Please do not use hand or foreign body contact activities of the parts before cut off the power supply, .
7. During the operation, if foreign matter or liquid get into eyes, please timely with plenty of water flush eyes, and immediately consulting professional doctor. As the body is injured, please seek immediate medical attention.
8. Keep out of the reach of children, this is not toy, strongly suggest adult supervision.
9. Placed in ventilated and dry place, do not use, take the battery out.
- 10.The product items do not diet or swallowed.



## BX-8E Brushless Car

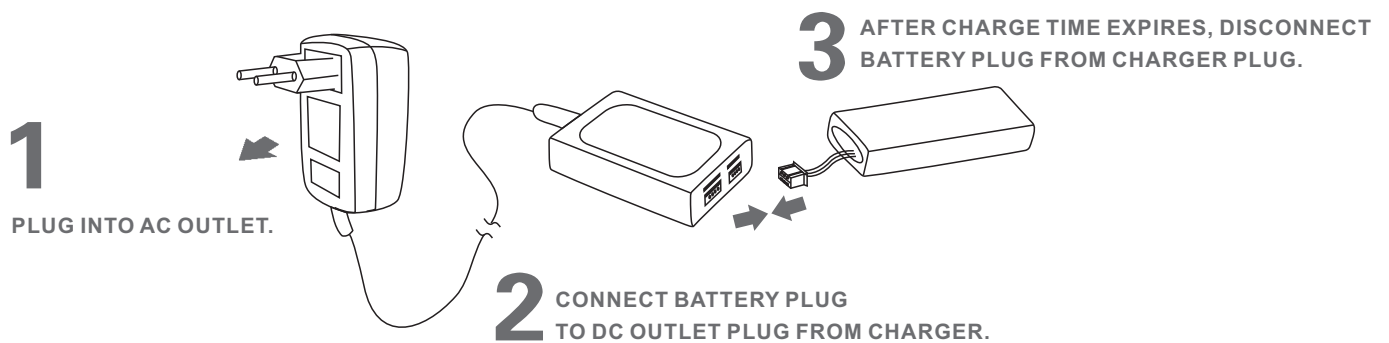


1	Tail	6	Drive Shaft
2	Tire	7	Gear Box
3	Drive Shaft	8	Brushless ESC
4	Brushless Motor	9	Battery
5	Receiver	10	Locknut



## CHARGING THE BATTERY PACK

- A. Once the battery ready to be charged, first plug the AC quick charger into the outlet of AC power source, and then connect the battery input/output harness to the charger.
- B. Continued to monitor the battery as it is being charged. As soon as the battery is fully charged, disconnect the battery from the charger plug (Over-charging or charging incorrectly using inadequate chargers may cause the battery pack to become dangerously hot).
- C. For best results, let the battery pack cool before charging. Heat may prevent the battery pack from charging to full capacity and also decreases the performance of the battery.



## LiPo BATTERIES

Lithium Polymer (Li-Po) batteries are becoming popular for use in R/C models due to their compact size, high energy density, and high-current output. However, these types of batteries require special care and handling procedures for long life and safe operation.

**Warning:** Lithium Polymer (Li-Po) batteries are intended only for advanced users that are educated on the risks associated with Li-Po battery use. THUNDER TIGER/ACE RC does not recommend that anyone under the age of 16 use or handle Li-Po battery packs without the supervision of a knowledgeable and responsible adult.

**Important:** Do not use NiCd/Ni-MH battery chargers for Li-PO batteries. If you do not use a special charger for Li-PO battery, they will be damaged.

**Please note! Consumers for use or installation of lipo battery in the remote control model belongs and cause any Direct or indirect damages, our company will not bear any legal liability.**

## TROUBLESHOOTING

**If you have trouble starting or keeping your love car running, here's a quick checklist of what to look for first.**

Description	Problem	Solution
Car dies or slows	Speed control over heats	Let it cool and try later
Car is glitching	Car has a problem on power	Check for loose wires, dead radio batteries or loose crystals. Check motor capacitors, loose wires or crystals.
Motor is overheats	Gear mesh is too tight	Let motor cool and check recommended gearing for motor type. Reset gear mesh
No power	Battery is discharged	Charge battery Charge battery
No throttle	Motor not plugged in Motor failure No throttle, only steering	Plug motor in Replace motor A-T-L function works; turn off the vehicle first and follow the guide to turn on the radio. (Radio first, vehicle second!!!)
	Motor keeps running	Check if the throttle trim knob is in neutral position.
No steering	Servo not plugged in Locked up steering linkage Servo failure	Plug servo into ESC unit Free up steering linkage Replace servo
Reversing	Goes backwards when you pull the trigger or goes right when turning the wheel left	Check throttle / steering reversing switches on transmitter

1:1 Scale



8077  
M3x12mm  
Countersunk Screw



8084  
Set Screw M4x4

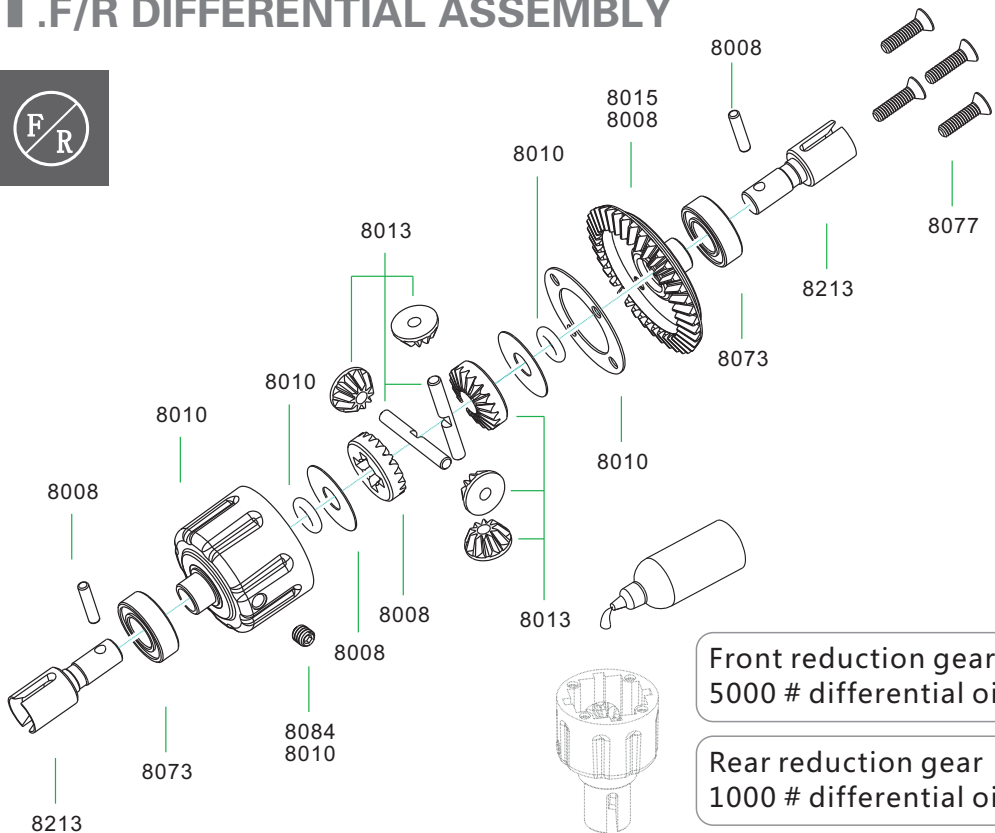


8073  
Ball bearing  $\phi 16 \times 8 \times 5$

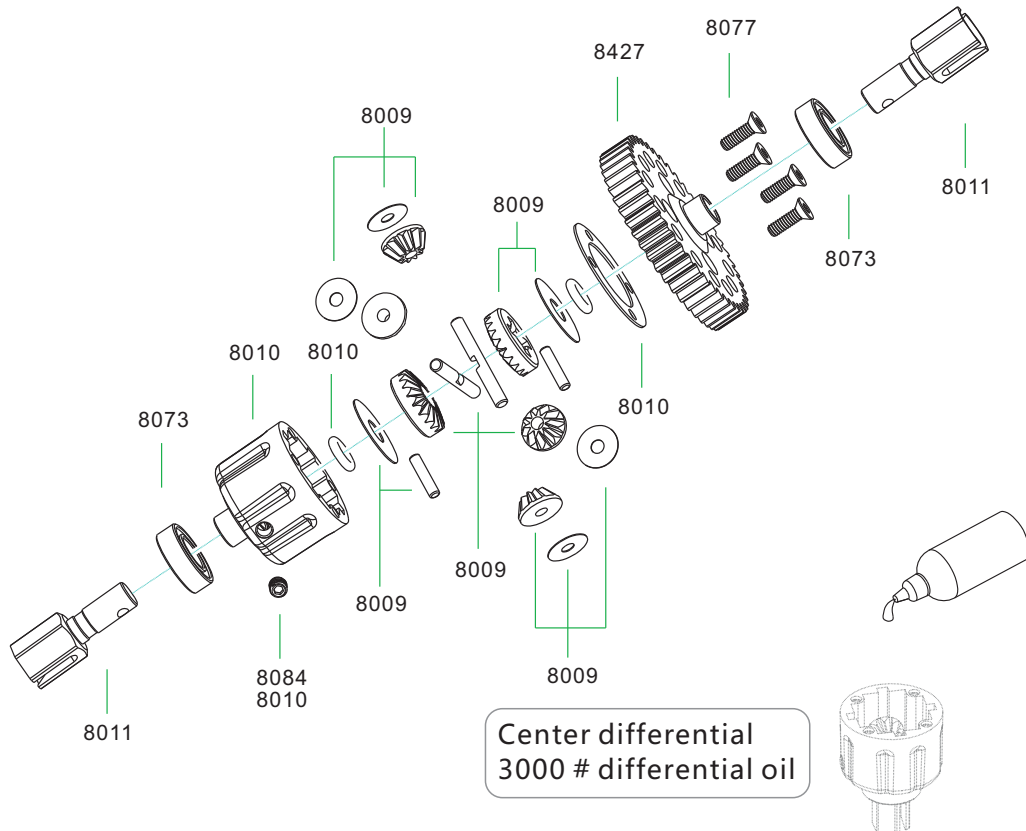


8008  
 $\phi 2.5 \times 11$  Pin Set

# 1. F/R DIFFERENTIAL ASSEMBLY



# 2. CENTER DIFFERENTIAL ASSEMBLY



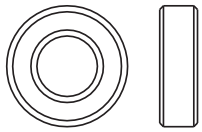
1:1 Scale



8077  
M3x12mm  
Countersunk Screw

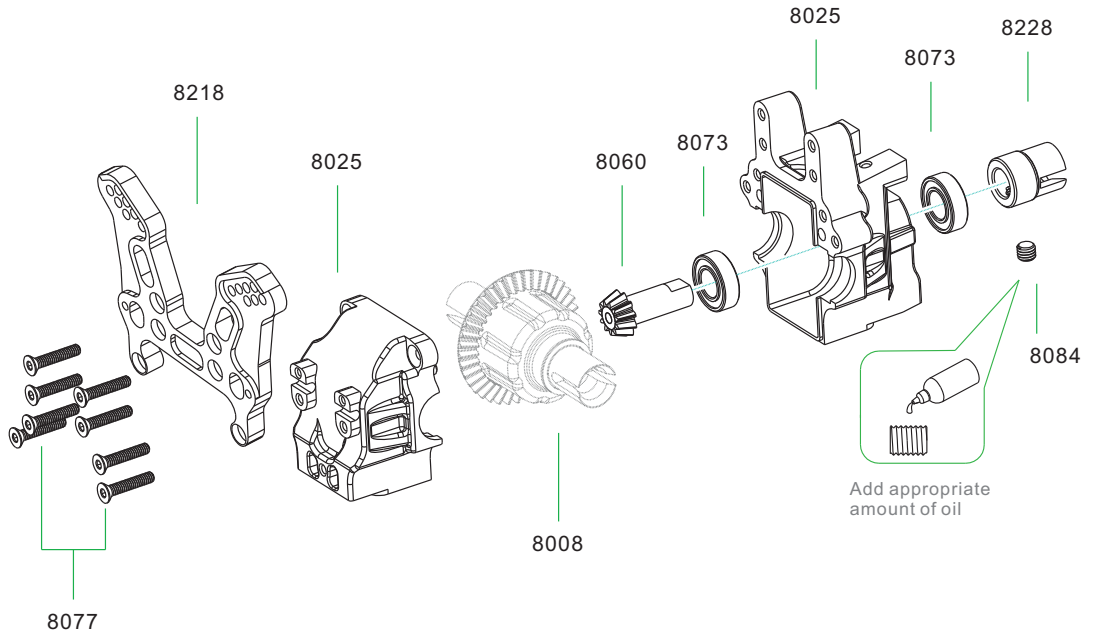


8084  
Set Screw M5x4

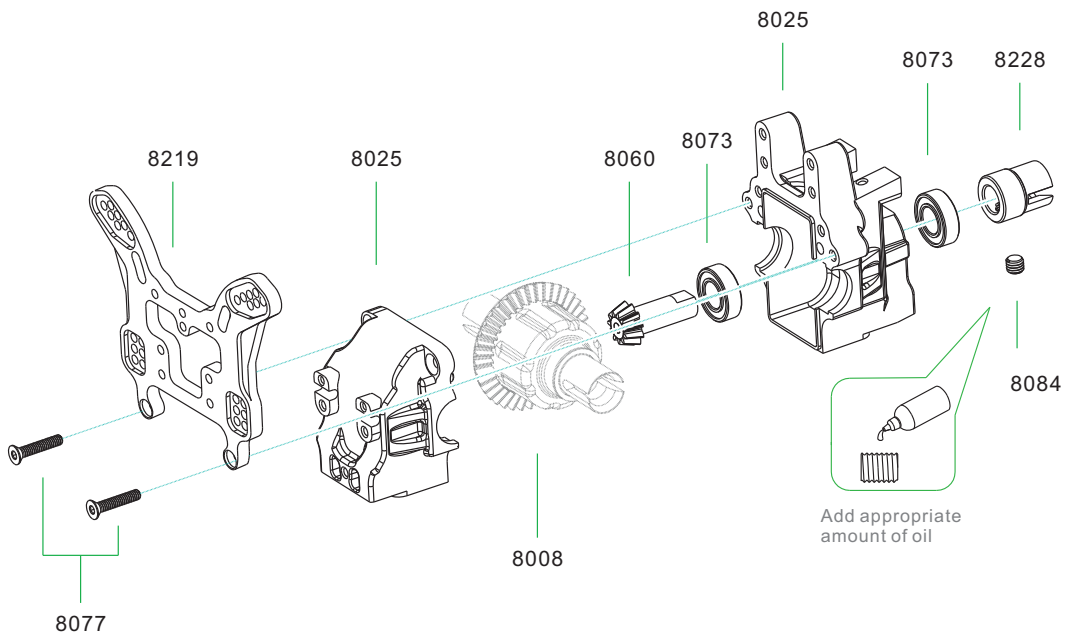


8073  
Ball bearing  $\phi 16 \times 8 \times 5$

## 3.FRONT GEAR BOX ASSEMBLY



## 4.REAR GEAR BOX ASSEMBLY









1:1 Scale


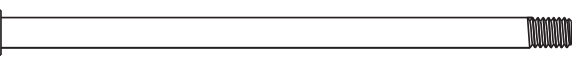
   
**8084**  
 Set Screw M3x4

   
**8108**  
 M3x6mm  
 Countersunk Screw

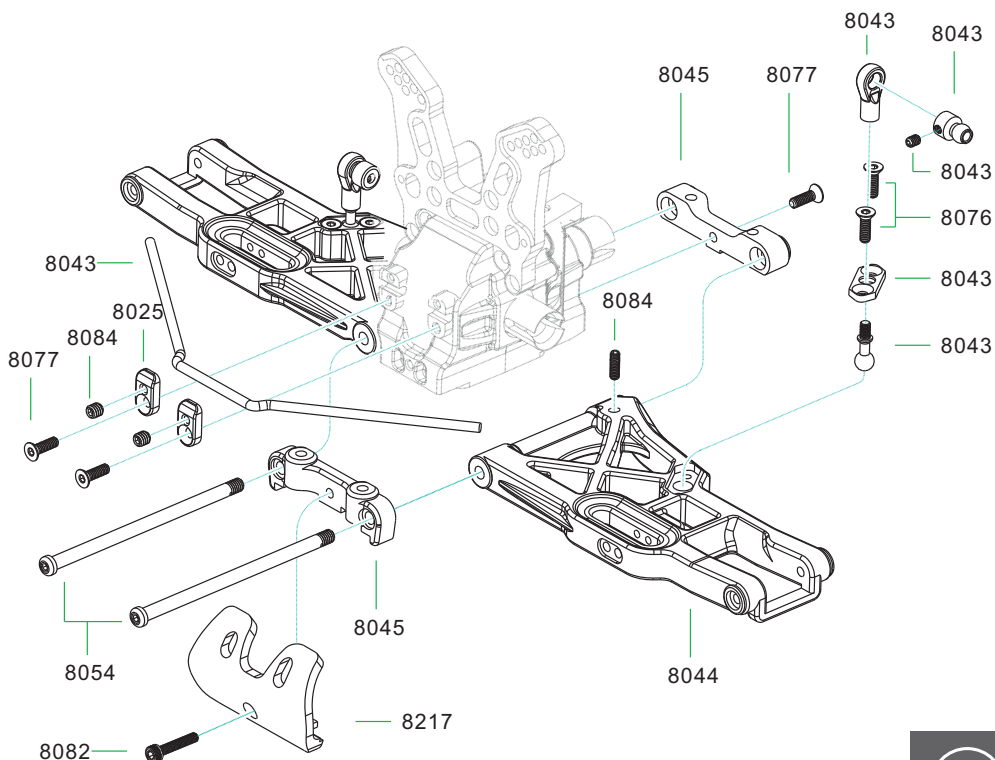
   
**8077**  
 M3x12mm  
 Countersunk Screw



   
**8081**  
 M3x12mm  
 Button Head Screw

   
**8085**  
 Lock Nut M3

   
**8054**  
 4x76mm Hinge Pin



## 5.FRONT LOWER SUSPENSION ARM ASSEMBLY



   
**8082**  
 M3x12mm  
 Socket Cap Screw

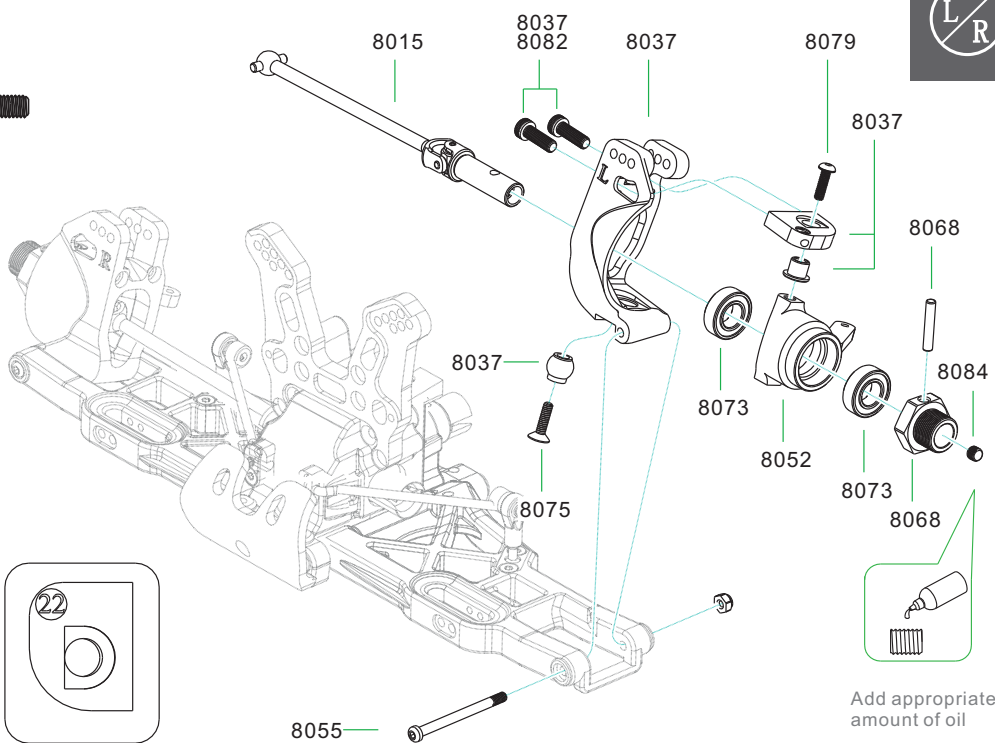
   
**8055**  
 3x37mm Hinge Pin

   
**8079**  
 M4x12mm  
 Button Head Screw

   
**8075**  
 M4x16mm  
 Countersunk Screw

   
**8084**  
 Set Screw M4x4

## 6.STEERING ARMS ASSEMBLY



Add appropriate amount of oil

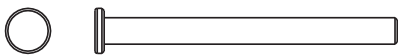
1:1 Scale



**8077**  
M3x12mm  
Countersunk Screw



**8082**  
M3x25mm  
Socket Cap Screw

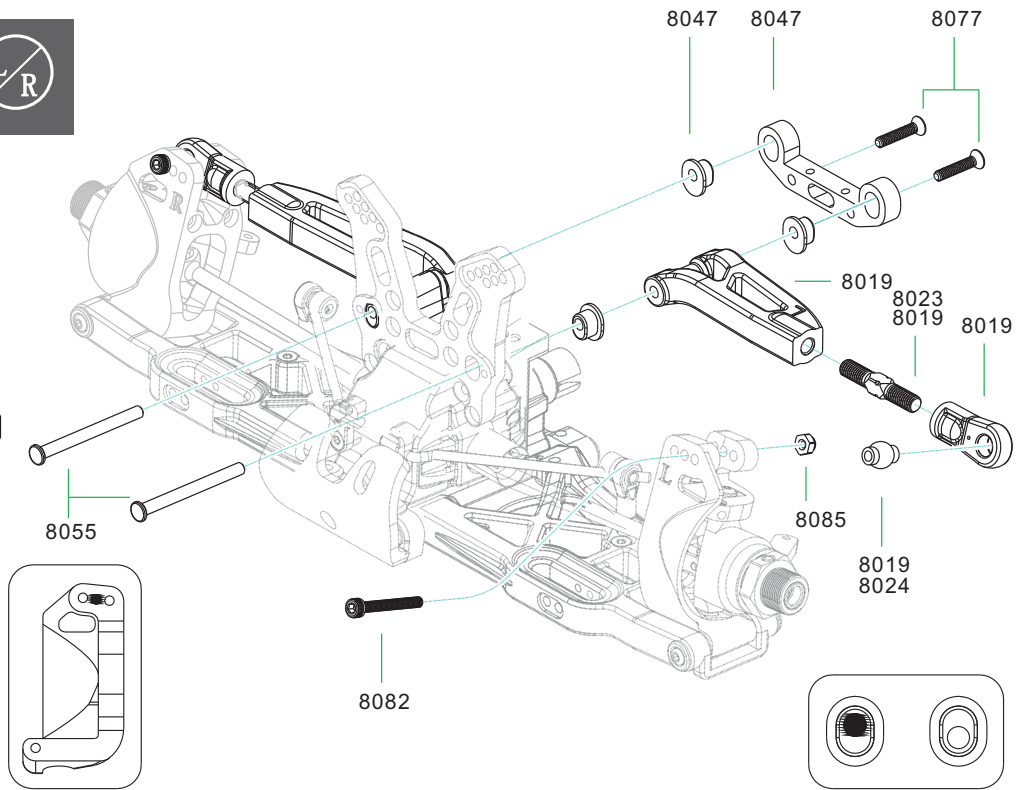


**8055**  
3.5x39mm Hinge Pin



**8085**  
Lock Nut M3

## 7. FRONT UPPER SUSPENSION ARM ASSEMBLY



## 8. REAR LOWER SUSPENSION ARM ASSEMBLY



**8084**  
Set Screw M3x4



**8108**  
M3x6mm  
Countersunk Screw



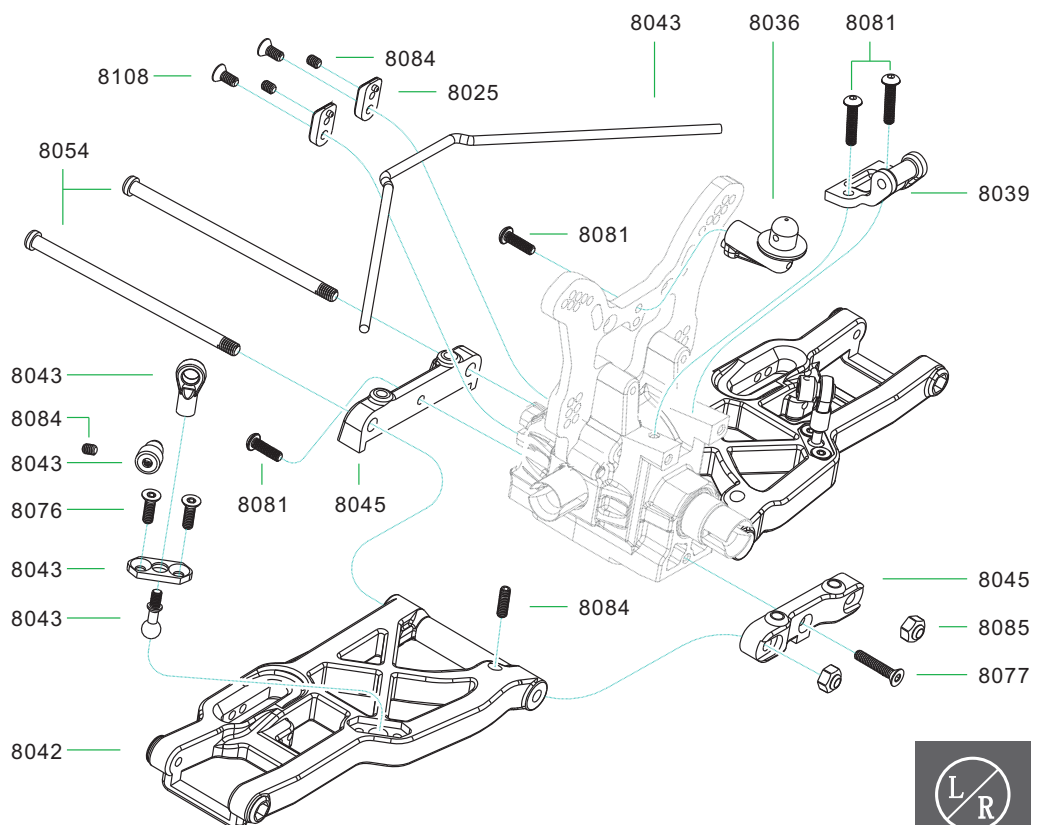
**8081**  
M3x12mm  
Button Head Screw



**8085**  
Lock Nut M4



**8078**  
M3x6mm  
Button Head Screw





1:1 Scale

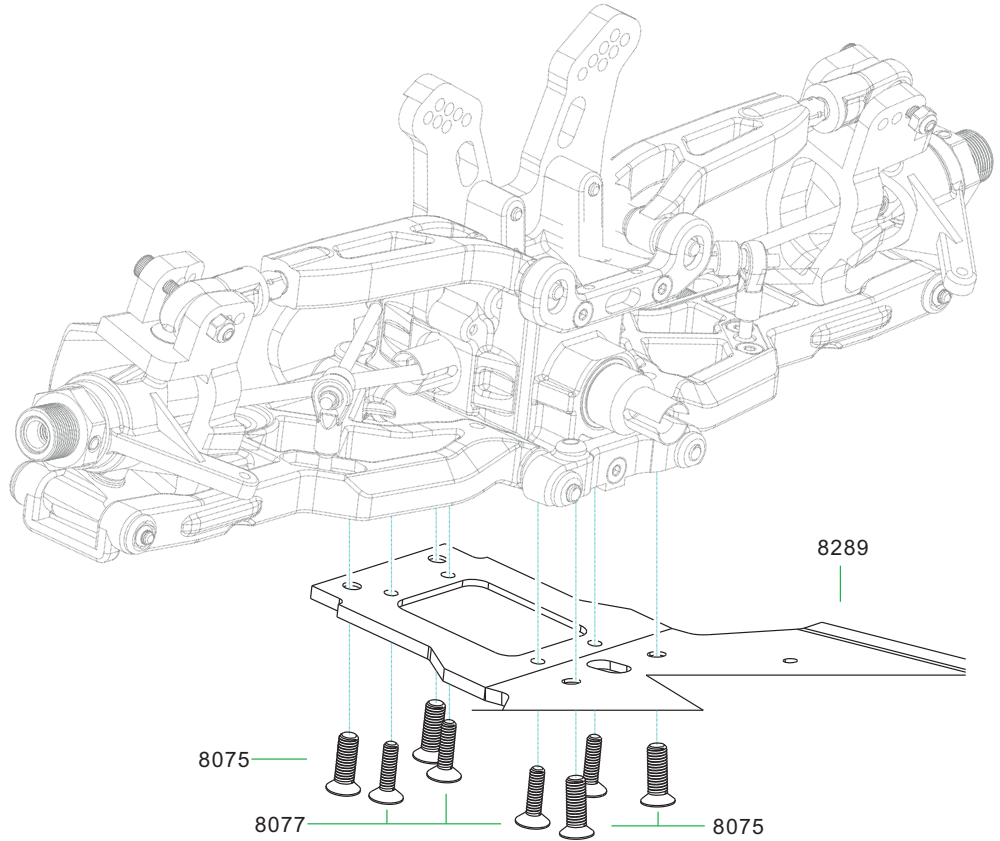


8077  
M3x12mm  
Countersunk Screw



8075  
M4x12mm  
Countersunk Screw

## 11. REAR SUSPENSION ASSEMBLY

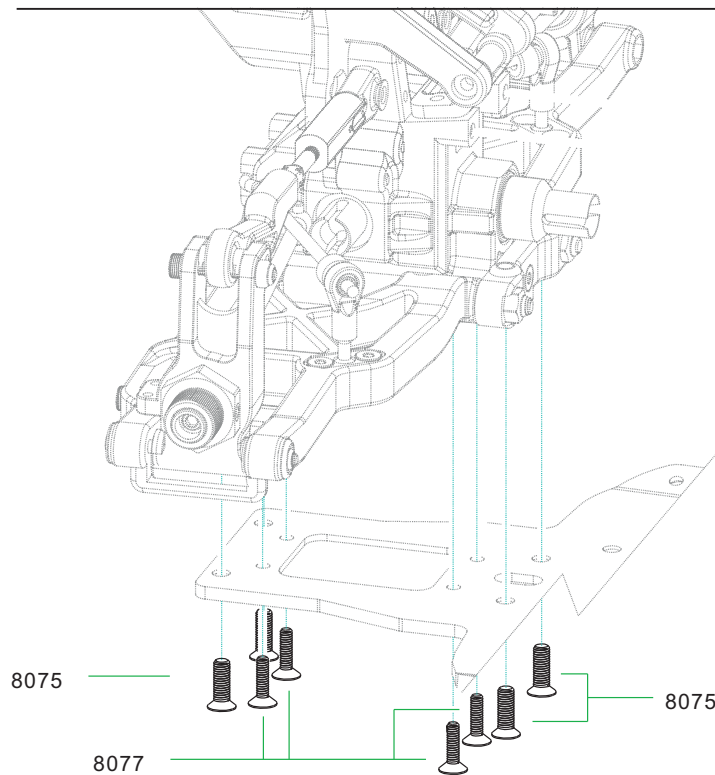


8077  
M3x12mm  
Countersunk Screw



8075  
M4x12mm  
Countersunk Screw

## 12. REAR SUSPENSION ASSEMBLY





1:1 Scale



**8081**  
M3x16mm  
Button Head Screw



**8081**  
M3x13mm  
Button Head Screw

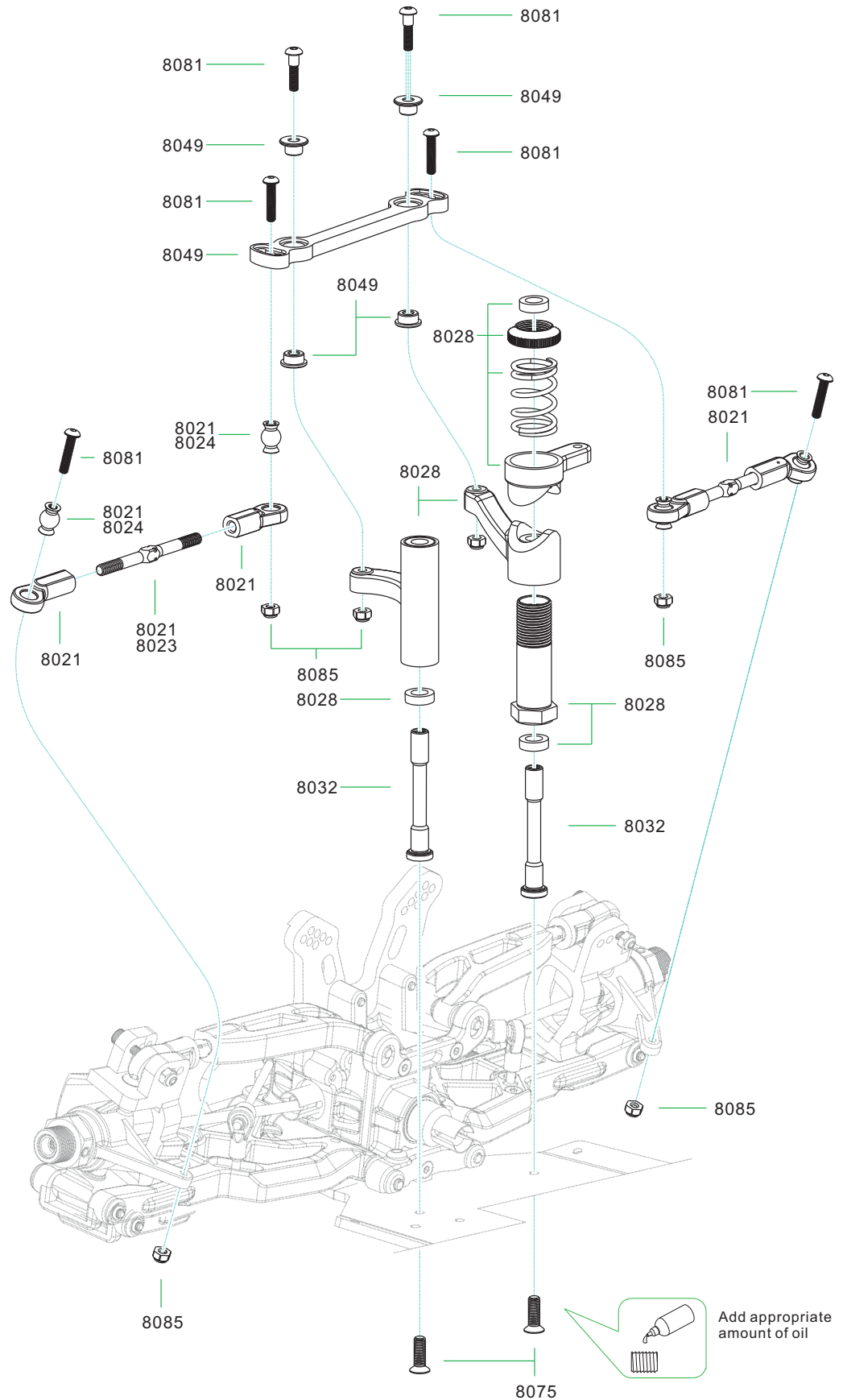


**8075**  
M3x8mm  
Countersunk Screw



**8085**  
Lock Nut M3

# 13. STEERING ASSEMBLY



1:1 Scale



8078  
M3x10mm  
Button Head Screw



8075  
M4x8mm  
Button Head Screw



8076  
M3x10mm  
Countersunk Screw



8078  
M3x10mm  
Button Head Screw



8108  
M3x32mm  
Button Head Screw

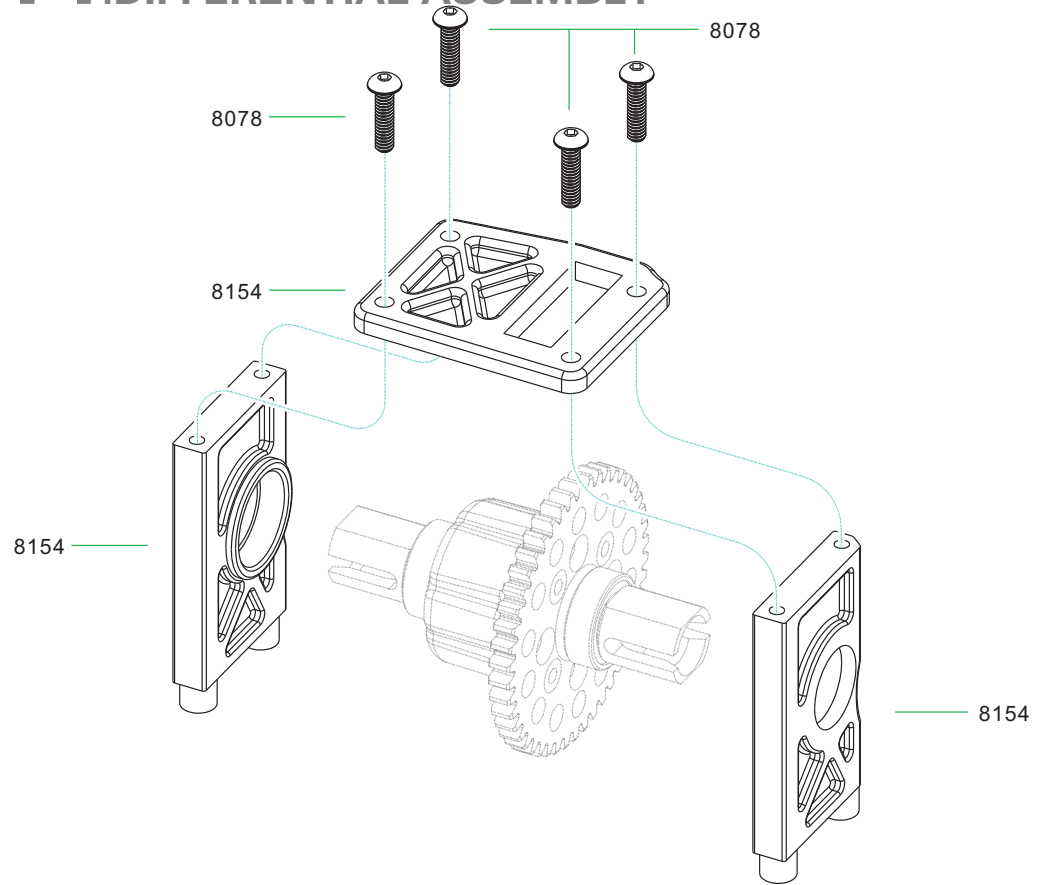


8077  
M3x14mm  
Countersunk Screw

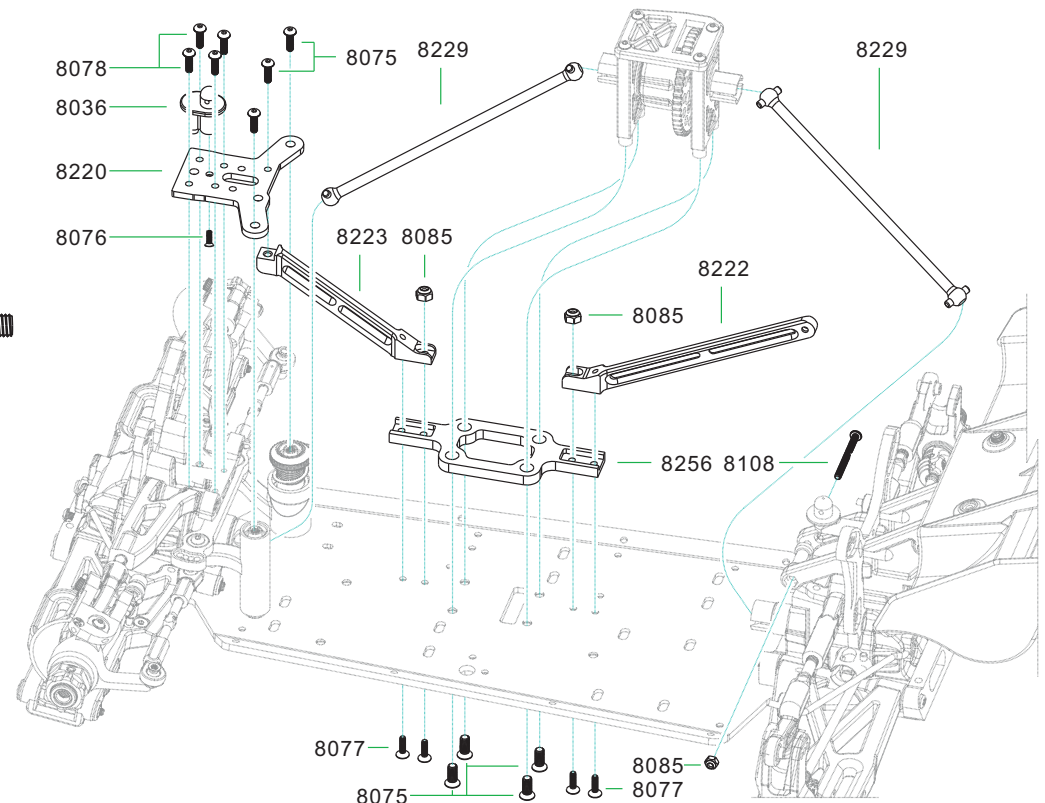


8085  
Lock Nut M3

## 14. DIFFERENTIAL ASSEMBLY




## 15. SUPPORT BRACE ASSEMBLY




1:1 Scale

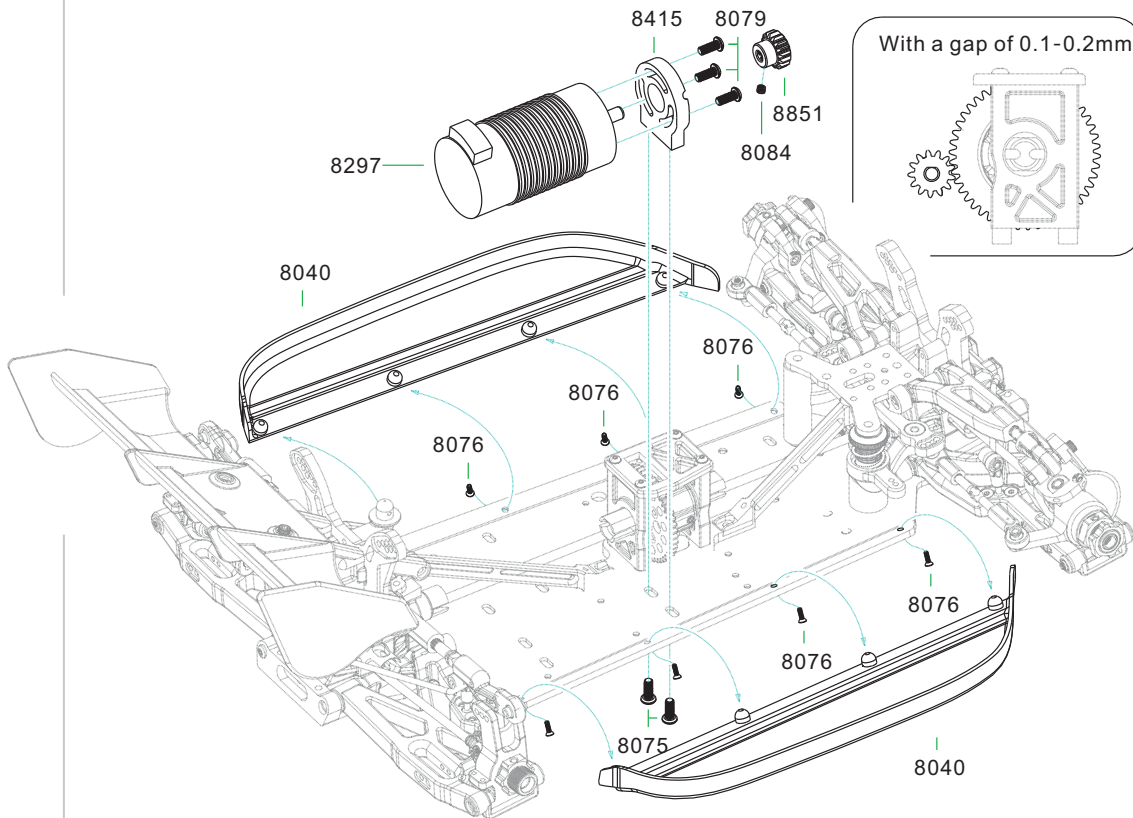
# 16.MOTOR ASSEMBLY

  
8076  
M3x8mm  
Countersunk Screw


  
8079  
M4x12mm  
Button Head Screw

  
8084  
Set Screw M4x4

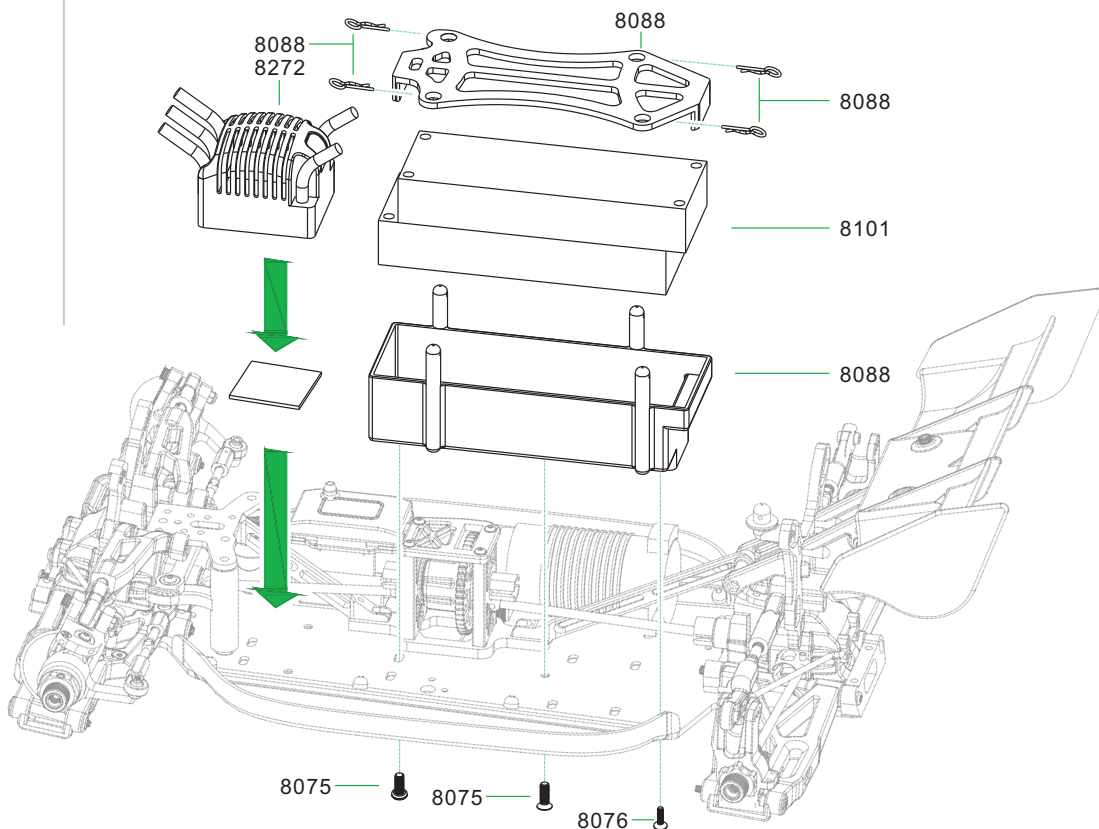
  
8075  
M4x8mm  
Flat Head Screw



# 17.BATTERY/ESC ASSEMBLY

  
8075  
M4x8mm  
Countersunk Screw

  
8076  
M3x8mm  
Countersunk Screw



1:1 Scale



**8078**  
 M3x10mm  
 Button Head Screw



**8079**  
 M3x18mm  
 Button Head Screw

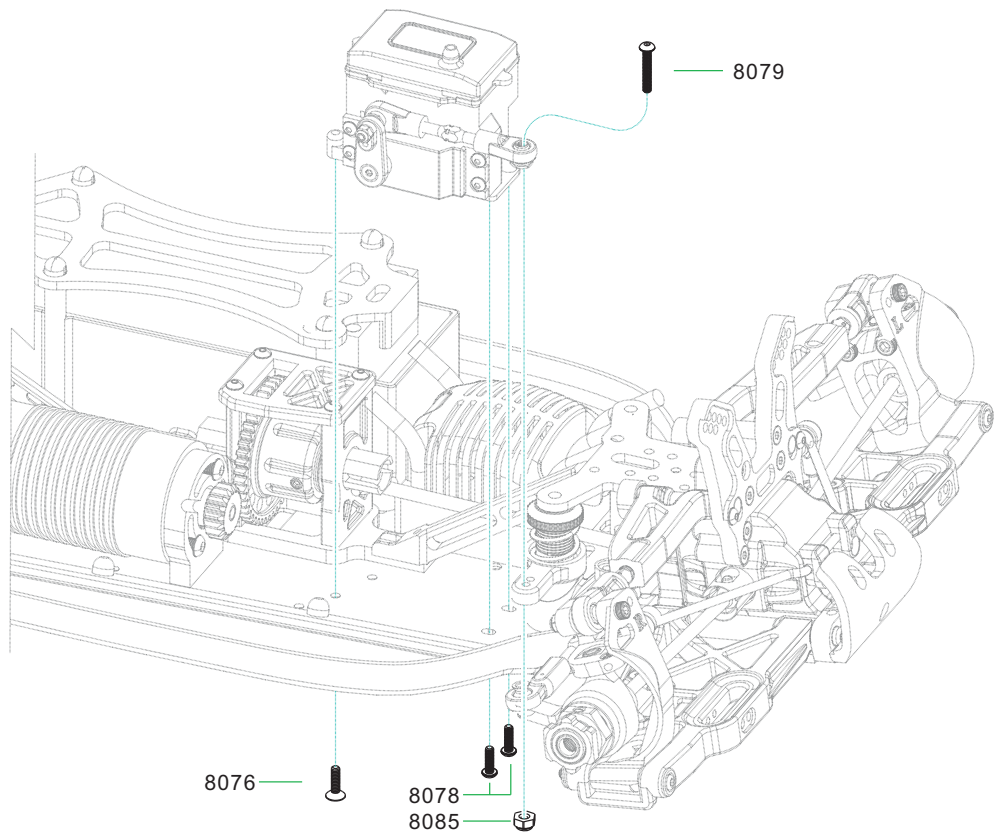
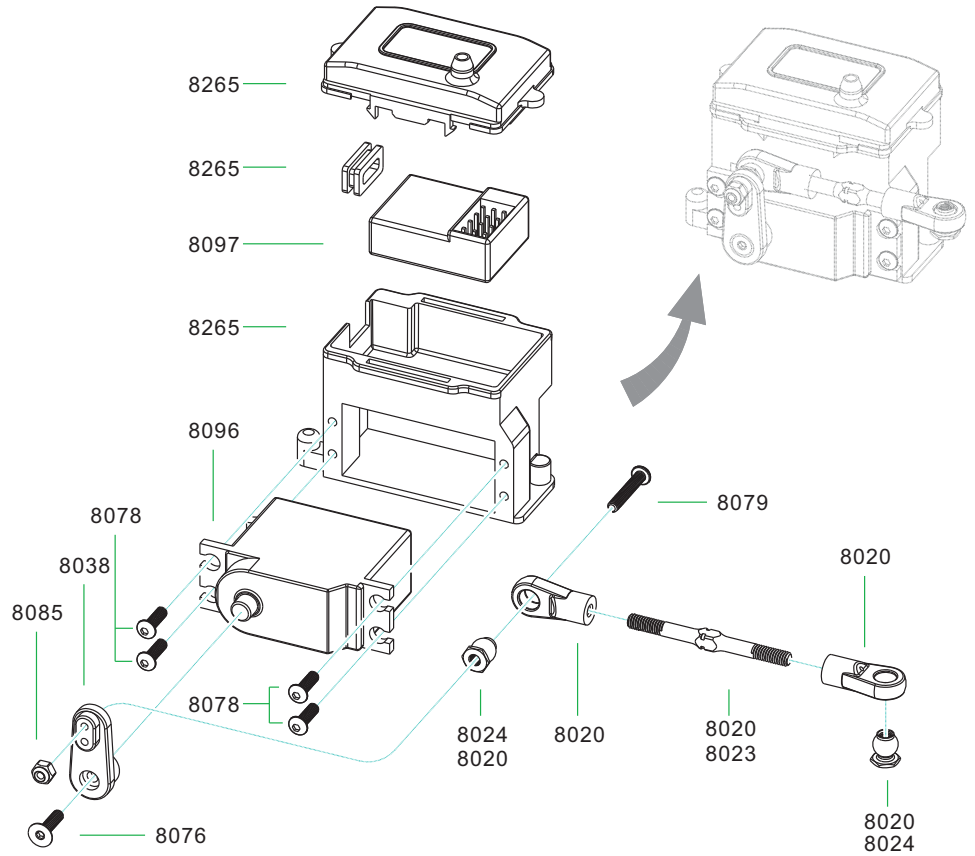


**8085**  
 Lock Nut M3



**8076**  
 M3x10mm  
 Button Head Screw

# 18.SERVO ASSEMBLY







1:1 Scale

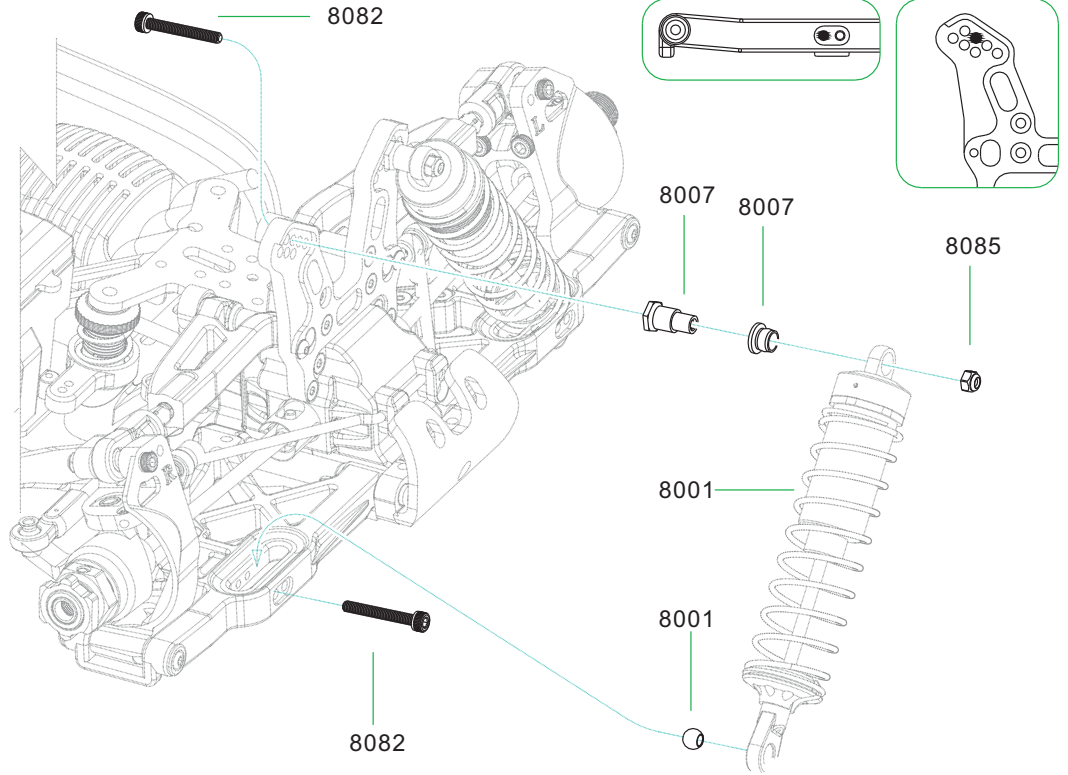


8082  
M3x25mm  
Socket Cap Screw



8085  
Lock Nut M3

## 20. FRONT SHOCK ABSORBER ASSEMBLY

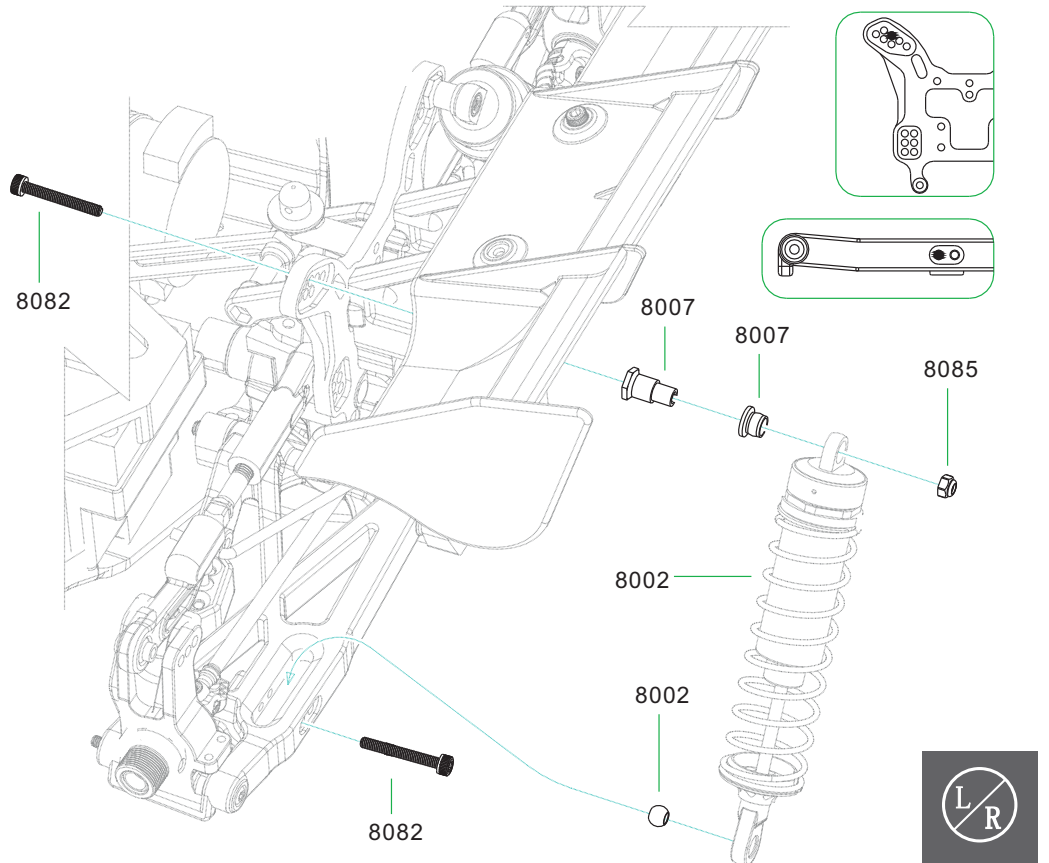


8082  
M3x25mm  
Socket Cap Screw



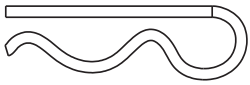
8085  
Lock Nut M3

## 21. REAR SHOCK ABSORBER ASSEMBLY

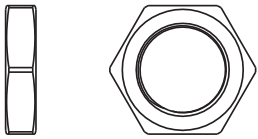


1:1 Scale

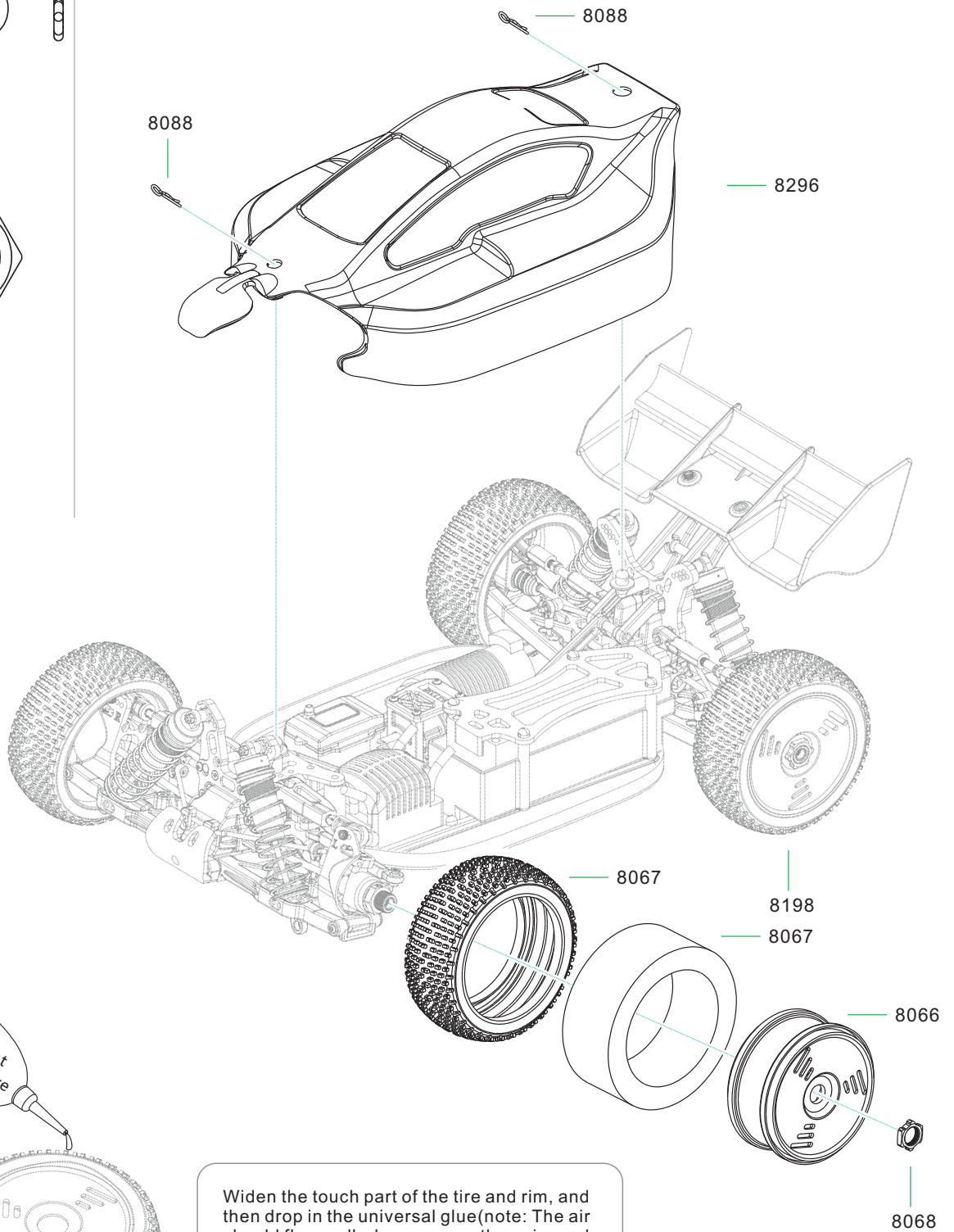
# 22.BODY/TIRE ASSEMBLY



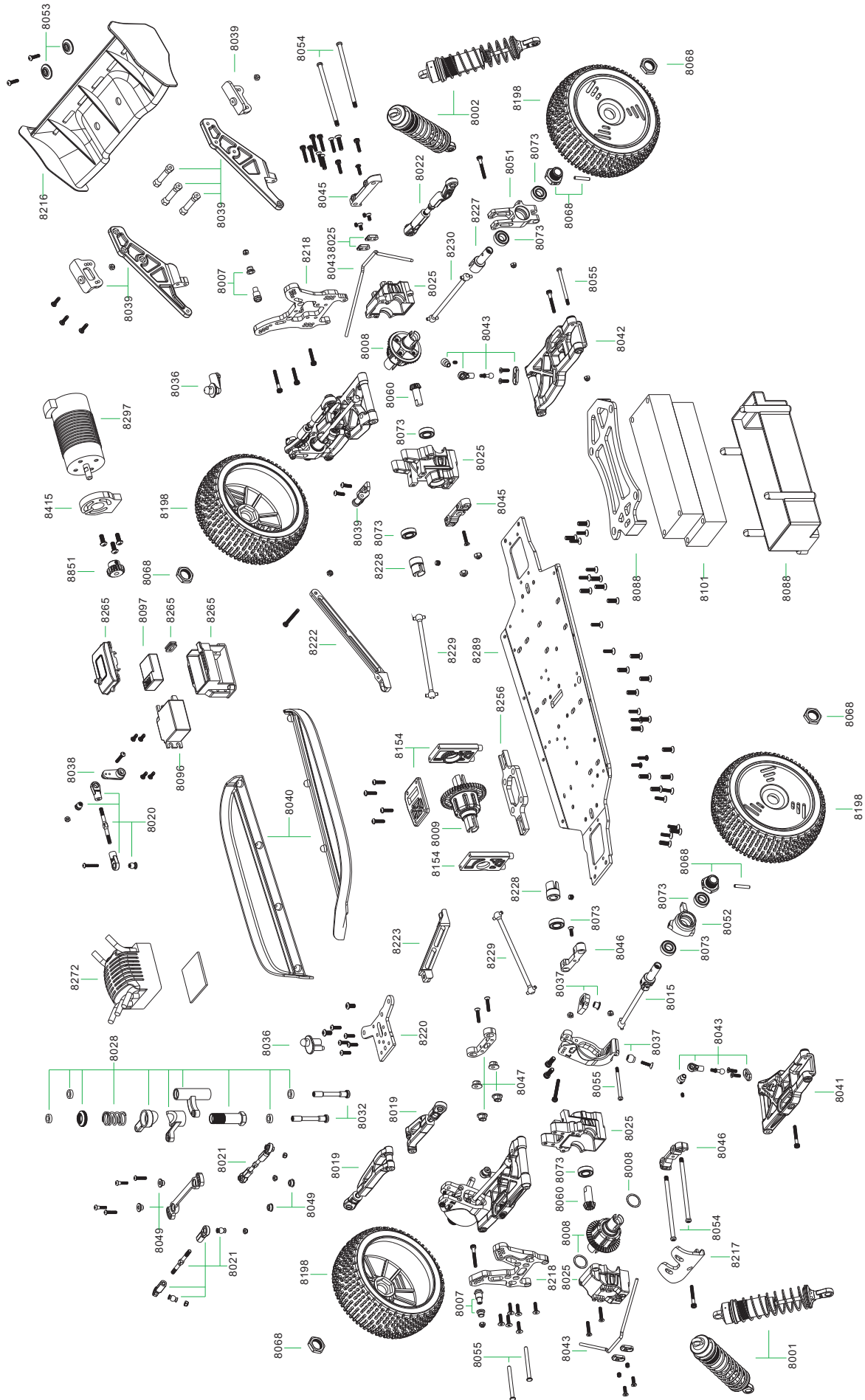
8088  
R-Pin Set



8068  
H17 Wheel Hex Nuts



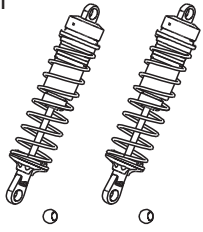
Widen the touch part of the tire and rim, and then drop in the universal glue (note: The air should flow well when you use the universal glue. The operator should wear respirator, goggle and gloves to avoid the accident. The juveniles should operate under the supervise of the adults)





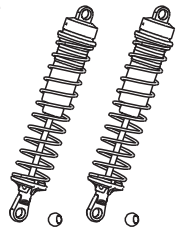
# REPLACEMENT PARTS

8001



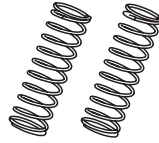
Front Shock Absorbers

8002



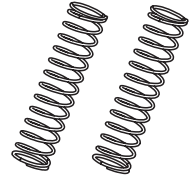
Rear Shock Absorbers

8003



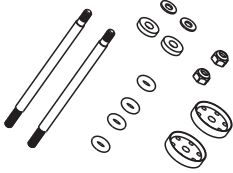
Front Shock Absorber Springs

8004



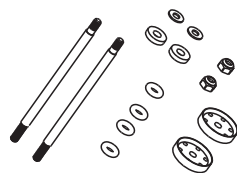
Rear Shock Absorber Springs

8005



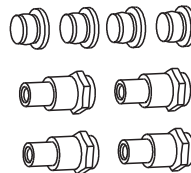
Front Shock Absorber Shafts

8006



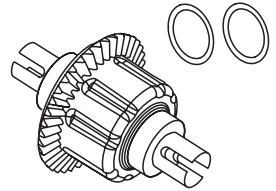
Rear Shock Absorber Shafts

8007



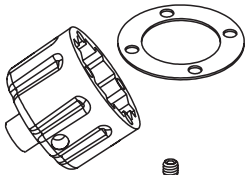
Shock Absorber Bushing

8008



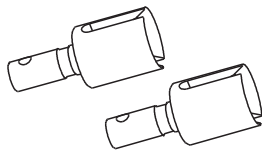
Differential (CNC)

8010



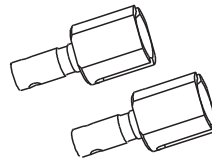
Differential Case

8011



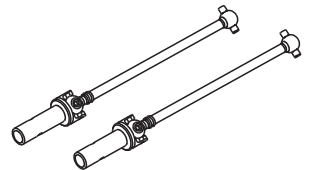
Planet Gear Joints

8012



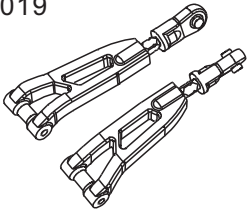
Center Differential Joints

8015



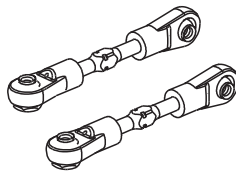
Horizontal Universal Drive Shaft

8019



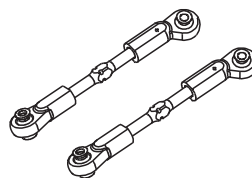
Front Upper Suspension Arms

8020



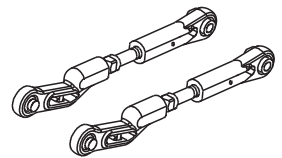
Steering Rods I

8021



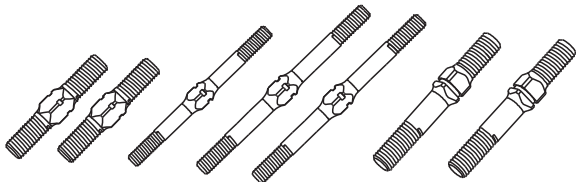
Steering Rods II

8022



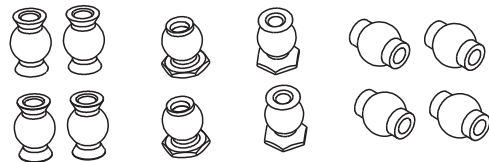
Rear Upper Tie Rod

8023



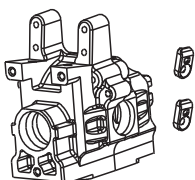
All Rods

8024



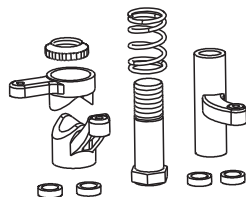
All Ball Heads

8025



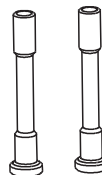
Gear Case

8028



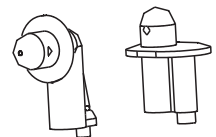
Steering

8032



Steering Shafts

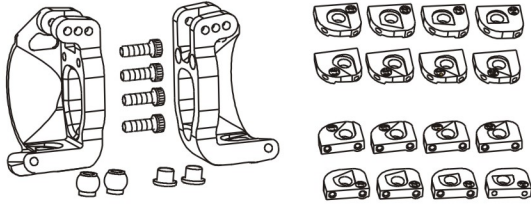
8036



Shell Mounts

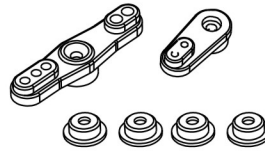
## REPLACEMENT PARTS

8037



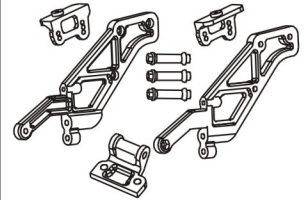
C-Mounts

8038



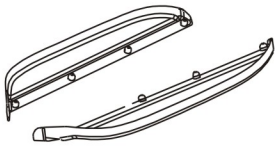
Servo Horns

8039



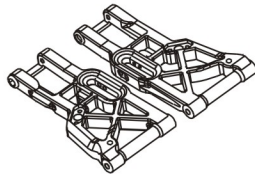
Tail Wing Brackets

8040



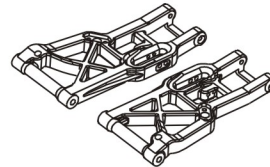
Side Plates

8041



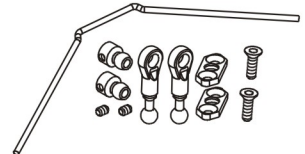
Front Lower Suspensions

8042



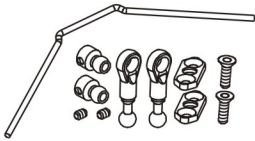
Rear Lower Suspensions

8043



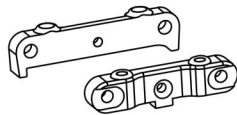
Rear Anti-roll Bars

8044



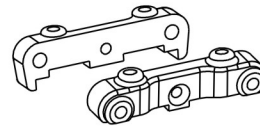
Front Anti-Roll Bars

8045



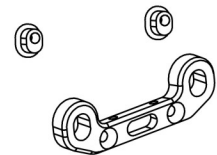
Rear Lower Suspension Bracket Mounts (CNC Machined)

8046



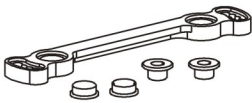
Front Lower Suspension Bracket Mounts (CNC Machined)

8047



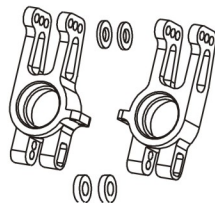
Front Upper Suspension Bracket Mounts (CNC Machined)

8049



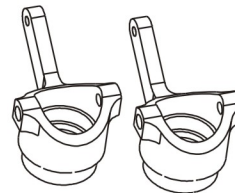
Steering Connecting Plates (CNC Machined)

8051



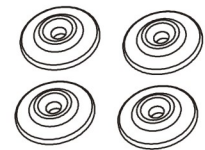
Rear Hub Carriers (CNC Machined)

8052



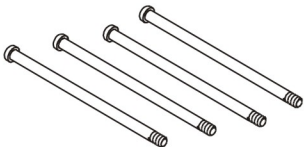
Steering Cups (CNC Machined)

8053



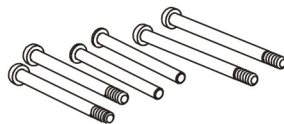
Tail Wing Washers

8054



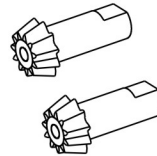
Pins for Lower Suspension Arms

8055



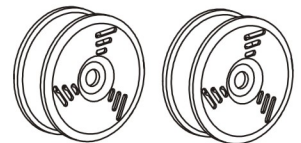
Pins for Upper Suspension Arms, C-mount and Rear Hub Carrier

8060



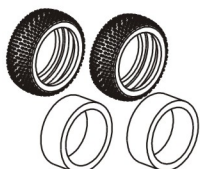
Pinion Gears (CNC Machined)

8066



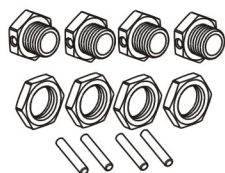
Tire Rim Set

8067



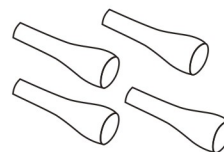
Tires and Sponges

8068



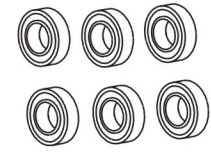
Hex Wheel Hub Mounts

8070



Dust Covers for Shock Shaft

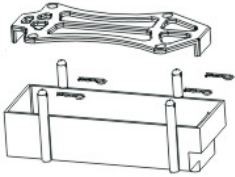
8073



16 x 8 x 5 Bearings

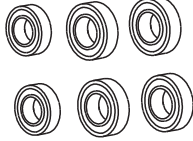
## REPLACEMENT PARTS

8088



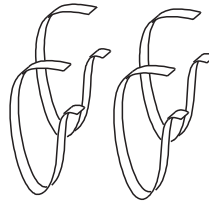
Battery Chassis

8091



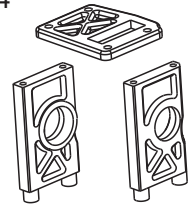
10 x 6 x 3, 12 x 6 x 4 Bearings

8104



Velcro

8154



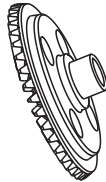
Centre Differential Mount  
(up and low)

8198



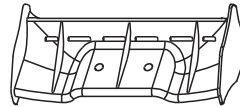
Pre-glued tire

8215



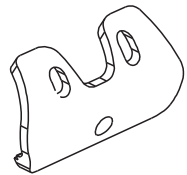
38T Decelerating Spur Gear  
(CNC Machined)

8216



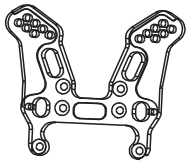
Tail Wing

8217



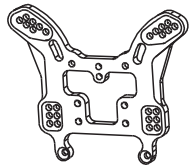
Front Bumper

8218



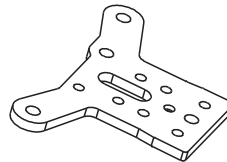
Front Shock Tower Plate (CNC Machined)

8219



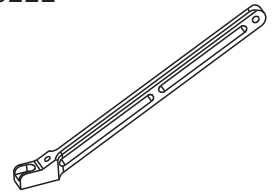
Rear Shock Tower Plate (CNC Machined)

8220



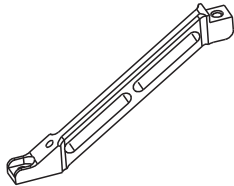
Front Upper Plate (CNC Machined)

8222



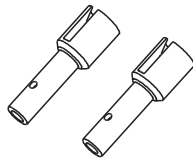
Rear Support Brace (CNC Machined)

8223



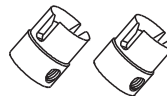
Front Support Brace (CNC Machined)

8227



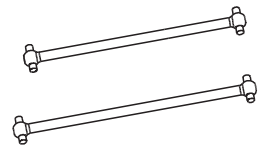
Wheel Axles

8228



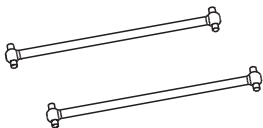
Drive Gear Connecting Cups

8229



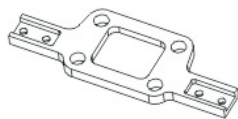
Front and Rear  
Vertical Drive Shafts

8230



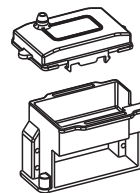
Horizontal Drive Shafts (rear)

8256



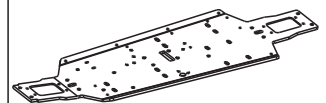
Reducer Base (CNC Machined)

8265

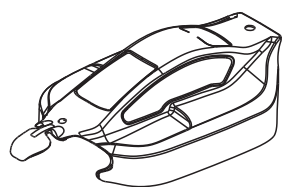


Receiver box / ESC mount

8289



Chassis CNC



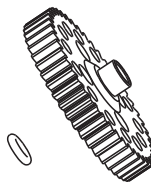
8296 PVC Body (Blue, white)  
8459 PVC Body (Yellow, black)

8415



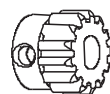
Aluminium Motor Mount  
(CNC Machined)

8427



Plastic Spur Gear 46T

8851

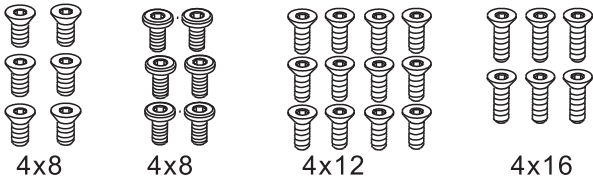


Motor Gears 16T  
(CNC Machined)



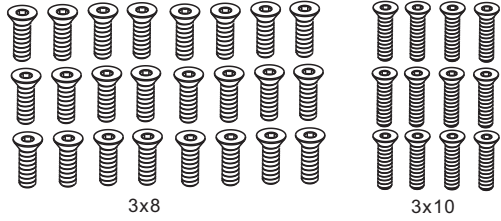
## REPLACEMENT PARTS

8075



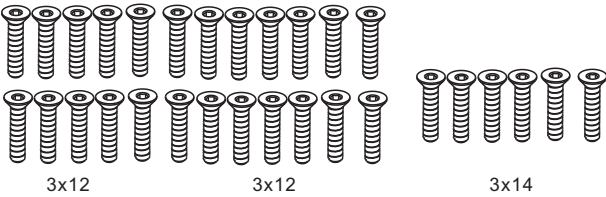
Flat Head & Cap Screw Set

8076



Flat Head Screw Set

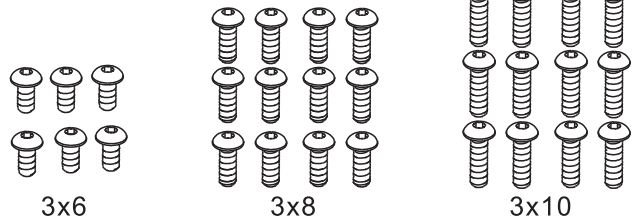
8077



Flat Head Screw Set

8078

Button Head Screw Set



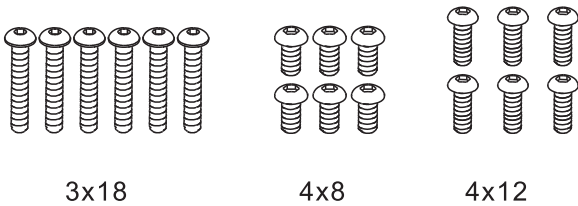
3x6

3x8

3x10

8079

Button Head Screw Set



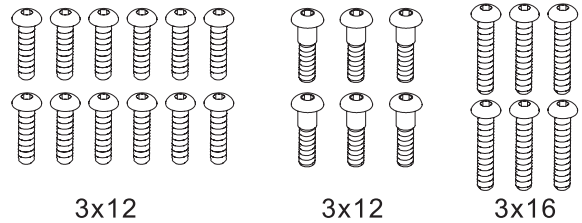
3x18

4x8

4x12

8081

Button Head Screw Set

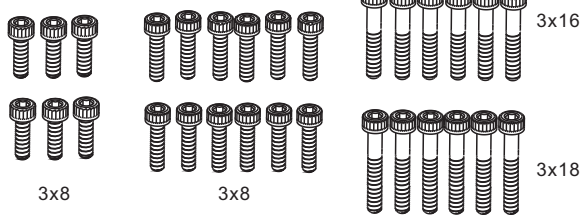


3x12

3x12

3x16

8082



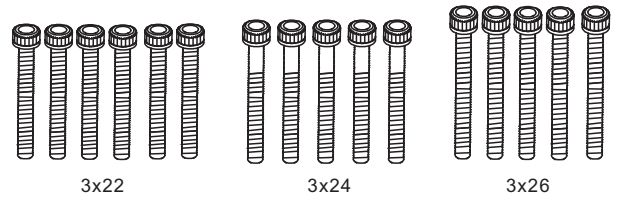
3x8

3x8

3x16

Cap Screw Set

8083



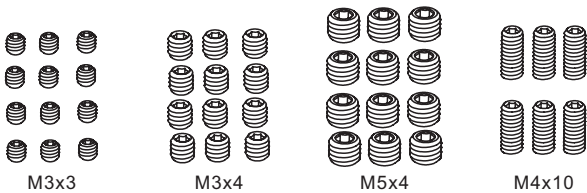
3x22

3x24

3x26

Cap Screw Set

8084



M3x3

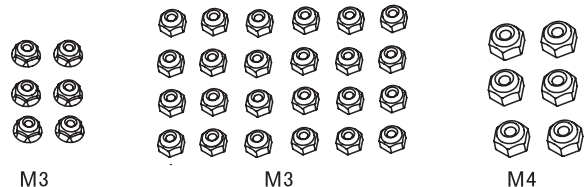
M3x4

M5x4

M4x10

Set Screw Set

8085



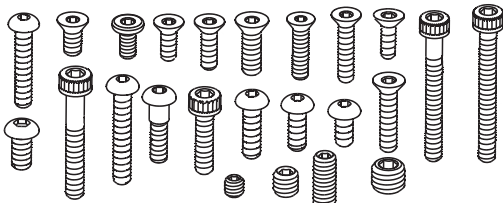
M3

M3

M4

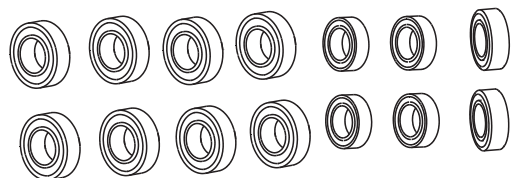
Locknut Set

8108



Complete Screw Set for Electric Buggy

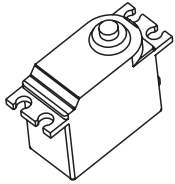
8109



Complete Bearing Set for Electric Buggy

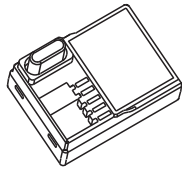
## REPLACEMENT PARTS

8096



9 kg Servo with Metal Gears

8097



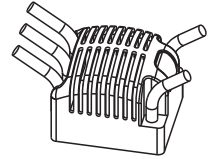
Receiver

8101



2 Cells, 4000mAh, 7.4V,  
25C Li-Po Batteries

8272



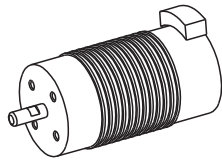
ZTW 120A  
Brushless ESC

8273



2.4G - 3-Channel Radio Set

8297



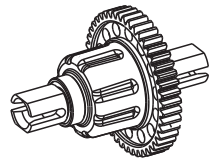
KB4274 Kv2200  
Brushless Motor

8315



Battery Lead Set

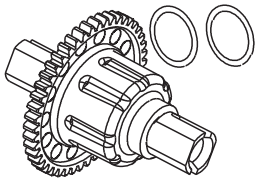
8280



46T Centre Differential  
(Plastic)

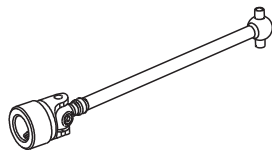
## OPTIONAL UPGRADE PARTS

8009



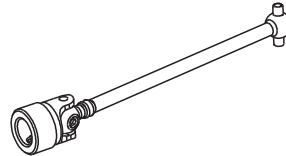
46T Centre Differential (CNC)

8014



Front Vertical Universal  
Drive Shaft

8016



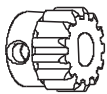
Rear Vertical Universal  
Drive Shaft

8069



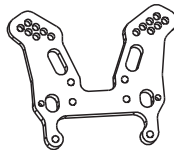
Dust Covers for  
Universal Drive Shaft

8195



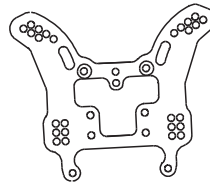
Motor Gears 13T (CNC)

8240



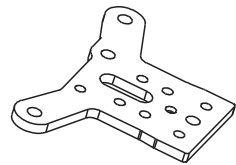
Front Shock Tower Plate  
(Carbon Fiber)

8241



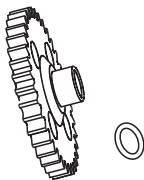
Rear Shock Tower Plate  
(Carbon Fiber)

8242



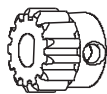
Front Upper Plate (Carbon Fiber)

8243



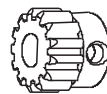
46T Decelerating Spur Gear  
(CNC)

8450



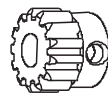
Motor Gears 14T (CNC)

8451



Motor Gears 15T (CNC)

8452



Motor Gears 17T (CNC)

**ZD RACING**  
[www.xingyaohua.com](http://www.xingyaohua.com)

**SHENZHEN XINGYAOHUA INDUSTRIAL CO.,LTD**

Tel: +86 (755) 66822520 +86 (755) 84008148

Fax: +86 (755)66822525 +86 (755) 84673903

Email: xyh@xingyaohua.com P.C: 518000



Made in china